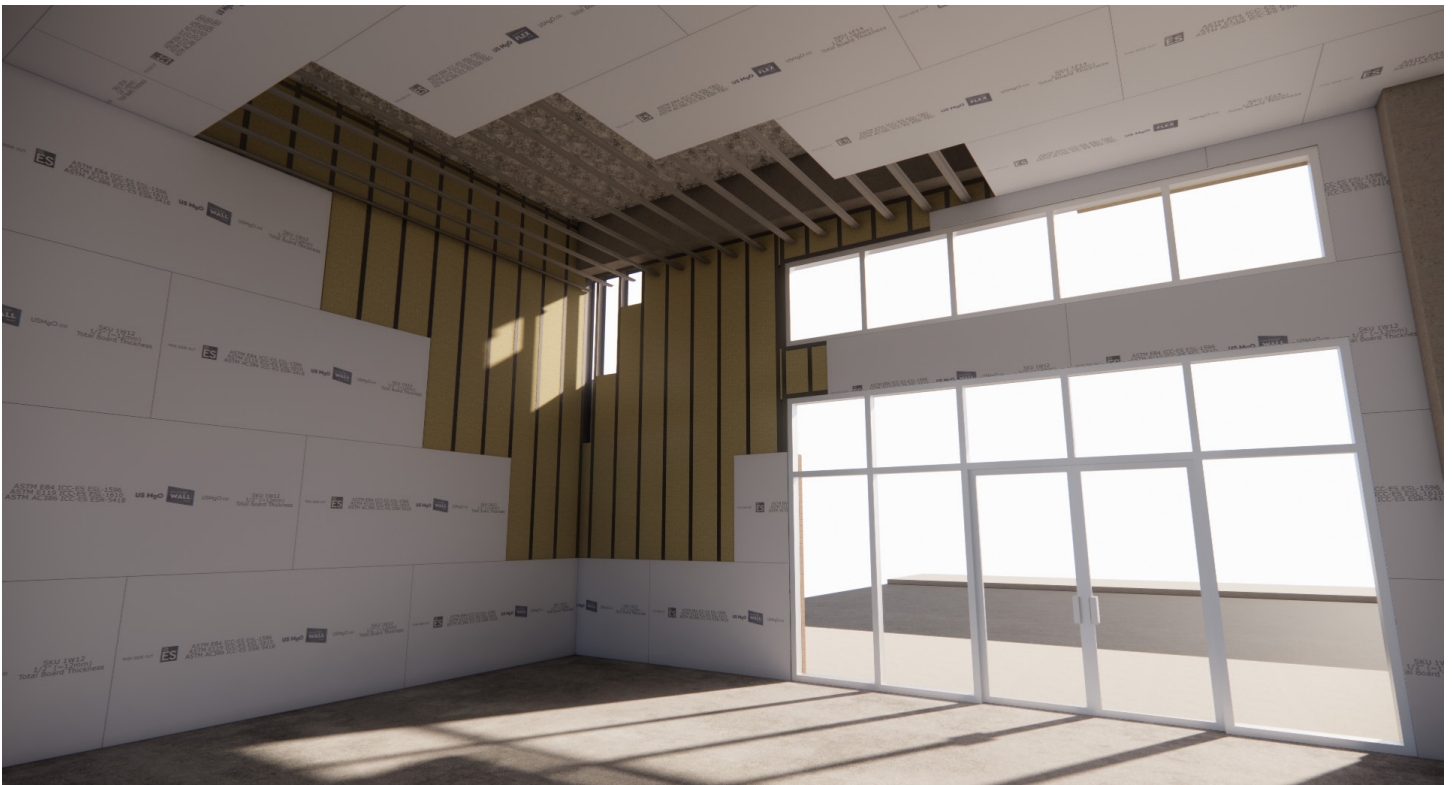


1/4" FLEX PANELS

Innovation MgO 1/4" Flex Panels offer unique characteristics that traditional gypsum cannot match in both exterior and interior applications. Unlike gypsum-based panels, Innovation MgO 1/4" Flex Panels offer lasting durability from damages and scratches and can be installed in all weather conditions, including when installing interior walls without a roof system in place. Innovation MgO Flex Panels offer better fastener pull-out strength as well, providing an ideal attachment base for interior walls.

For interior use, Innovation MgO Flex Panels can be treated much the same as interior gypsum for finishing, making them ideal for high traffic areas such as hallways and breezeways that are prone to damage and deterioration. Ceilings are another ideal use for these panels as they provide lasting durability and fire resistance.

SIP and SIS panel products are also an ideal use for these panels as they contribute both fire resistance and structural strength while enabling reliable and lasting attachment of WRBs and claddings during finishing.



1/4" FLEX PANELS

| Physical Properties | | | |
|---|---|--|--|
| Material Composition | Magnesium Oxychloride (MOC) Cement | Thickness | Nominal 1/4" (6mm) |
| Weight (lbs/sf) | ± 50 lbs (1.5) | Thickness Deviation (ASTM C1185) | < ± 1/16 in. (1.6mm) |
| Available Sizes | Nominal 48 in. (1220mm) x 96 in. (2440mm) x 1/4 in. (6mm) | Length, Width, and Diagonal Deviation (ASTM C1185) | < ± 1/16 in. (1.6mm) |
| Density | ≥ 1.09 g/cm ³ | Unprotected Exposure | 180 days |
| Test Name | Test Method | Results | More Info / Minimum AC |
| Code Acceptance | | | |
| Building Types | 2018 and 2021 IBC and IRC; 2023 FBC; 2022 CBC and CRC; 2023 LABC and LARC | All Building Types (I, II, III, IV, V) | PENDING |
| Code Evaluations | ASTM E84: Surface Burning Characteristics of Building Materials ASTM E119: Fire Tests of Building Construction and Materials ASTM E2768: Extended Duration Surface Burning Characteristics of Building Materials AC 386: Acceptance Criteria for Fiber-Reinforced Magnesium Oxide-Based Sheets | | PENDING PENDING PENDING PENDING |
| Fire & Thermal Resistance Properties | | | |
| Flame and Smoke Development | ASTM E84, ASTM E2768 | PENDING | - |
| Combustibility | ASTM E136-19 Method A | PENDING | - |
| Fire-Rated Wall Assemblies | ASTM E119 CAN/ULC-S101 | PENDING PENDING | - |
| Structural Properties | | | |
| Allowable Stud Spacing | - | PENDING | - |
| Compression Indentation | ASTM D2394 | PENDING | - |
| Flexural Strength (Machine / Cross Direction) | ASTM C1185 | PENDING | - |
| Humidified Deflection | ASTM C473 | PENDING | - |
| Falling Ball Impact | ASTM D1037 | PENDING | - |
| Uniform Static Air Pressure | TAS 202-94 | PENDING | - |
| Cyclic Air Pressure | TAS 203-94 | PENDING | - |
| Fastener & Adhesion Properties | | | |
| Dry-Set Cement Shear Bond Strength | ANSI A118.1/A118.4 | PENDING | - |
| Latex Cement Shear Bond Strength | ANSI A118.1/A118.4 | PENDING | - |
| Fastener Withdrawal | ASTM D1037 | > 40 lbs. (max force) | #10-13 Pancake Head Screw |
| Nail Head Pull-Through | ASTM D1037 | PENDING | - |
| Moisture Properties | | | |
| Moisture Absorption | ASTM C1185 | PENDING | - |
| Moisture Content | ASTM D4442 | PENDING | - |
| Water Vapor Permeability | ASTM E96 Water Method | PENDING | - |
| Moisture Movement Test | ASTM C1185 | PENDING | = |